

STANISLAUS COUNTY AGRICULTURAL CROP REPORT 2013

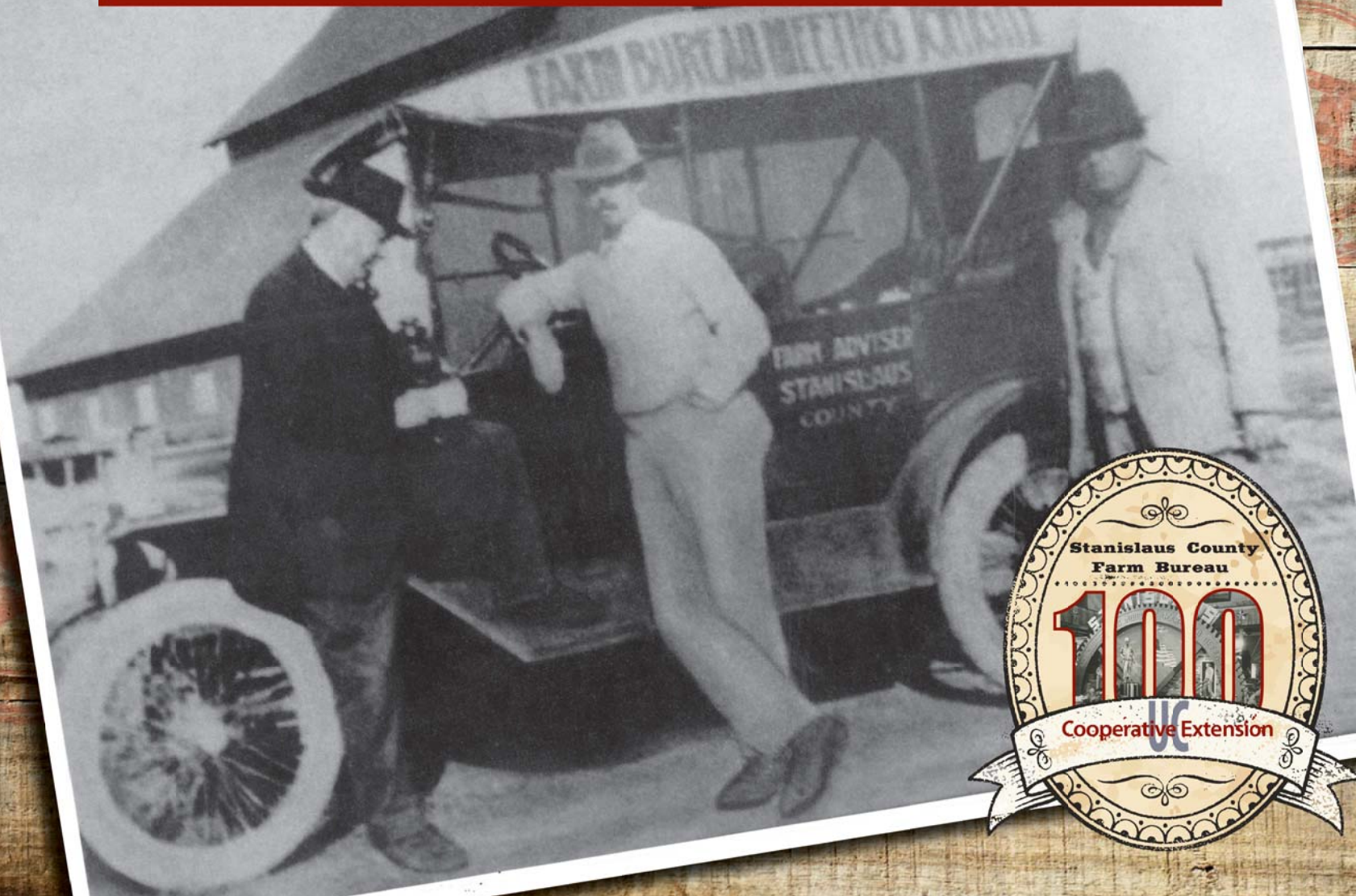


TABLE OF CONTENTS



Agricultural Commissioner's Letter	1
Cover Story	2-3
Fruit and Nut Crops	4
Vegetable Crops.....	5
Field Crops, Other Agriculture, & Seed Crops	6-7
Nursery Products, Organic Products & Apiary Products	8
Livestock and Poultry	9
Livestock and Poultry Products	10
Summary of Categories.....	11
50 Years of Production Summary.....	11
Top Ten Commodities	12
Stanislaus County Crops Map.....	13
Top Exports by Country.....	14-15
Pest Detection Projects	16
Farmers Markets.....	17



STANISLAUS COUNTY DEPARTMENT OF AGRICULTURE AND WEIGHTS AND MEASURES

3800 Cornucopia Way, Ste. B
Modesto, CA 95358 • (209) 525-4730

STAFF

Agricultural Commissioner/Sealer of Weights and Measures
Milton O'Haire

Assistant Agricultural Commissioner/Sealer
Daniel Bernaciak

Deputy Agricultural Commissioner/Sealers

Kamal Bagri Wendy Hahn Steve Logan Tim Pelican

Agricultural/Weights & Measures Inspectors

Judith Arroyo	Cristina Galvan	Isaiah Pagani
Marline Azevedo	Anna Genasci	Claudia Parrish
Arpinder Brar	Harinder Grewal	Kim Reed
Gerardo Castaneda	Deana Guerrero	Hector Rodriguez
Joe Duchala	Richard Homer	Kelle Schroeder
Christopher Egli	Forrest Meares	Carolyn Sizemore
Melanie Fisher		Becky Van Cleave

Agricultural Assistant II

Bertha Castillo Cassy Costa Mike Sise

Information and Technology

Tina Graver	Nathan Leon
Application Specialist II	Software Developer/Analyst III

Administrative Support

Susan Azevedo
Executive Assistant

Ramona Cunningham	Debby Tochez	Debbie Wohld
Account Clerk II	Accounting Technician	Confidential Assistant III

Agricultural Assistants-Seasonal

Gay Allard-Johnson	Susan Conyers	Vickie Meeks
Evelyn Barber	Jim Friedrich	Danielle Mitchell
Angela Bates	George Gold	Kirstyn Perry
Sandra Blevins	John Garcia	Molly Quigley
Stephen Bunce	Becky Graham	Ron Varnel
Maria Canchola	Alexa Ladd	Max Wilson



AGRICULTURAL COMMISSIONER'S OFFICE AND
SEALER OF WEIGHTS & MEASURES

Milton O'Haire
Agricultural Commissioner/Sealer

3800 Cornucopia Way, Suite B
Modesto, California 95358
Phone: 209.525.4730 Fax: 209.525.4790

Karen Ross, Secretary
California Department of Food and Agriculture
and

The Honorable Board of Supervisors of Stanislaus County

Jim DeMartini	District 5, Chairman
Terry Withrow	District 3, Vice-Chairman
William O'Brien	District 1
Vito Chiesa	District 2
Dick Monteith	District 4

We are pleased to submit, in accordance with Section 2279 of the California Food and Agricultural Code, Stanislaus County's Annual Crop and Livestock Report for 2013. This report provides a statistical description of Stanislaus County's agricultural production. We must emphasize that this report represents gross values of agricultural commodities and does not reflect production costs or profits.

The value of agricultural commodities produced last year in Stanislaus County increased 12% to **\$3,663,000,000**. This represents an all-time high in crop production values with an increase of \$399,578,000 from the 2012 gross production value of \$3,263,422,000. This is primarily attributed to an increase in almonds, walnuts and milk. The single largest increase was almonds which increased by \$389 million to become the County's first one billion dollar crop at \$1,125,200,000. Almond acreage, yield and price increased while walnuts and milk experienced an increase in price.

The contribution of agriculture to the economy of Stanislaus County is not totally reflected in the values contained in this report. Processing, transporting, marketing, and other farm related services directly or indirectly tied to agriculture benefited appreciably as the agricultural industry returned more than **\$13,000,000,000** to our local economy in 2013, or over \$35 million a day.

We wish to express our appreciation to agricultural producers, industry representatives and public agencies who have cooperated in providing data for this report. We would also like to express sincere thanks to the Agricultural Commissioner's staff, especially Agricultural Inspector Richard Homer who compiled the report, and Susan Azevedo who prepared the information for publication.

Respectfully submitted,

Milton O'Haire
Agricultural Commissioner/Sealer
Stanislaus County

Theresa Spezzano
County Director, UC Cooperative Extension
Stanislaus County



University of California Cooperative Extension & Stanislaus County Farm Bureau



100 Years of Cooperative Extension and Stanislaus County Farm Bureau:

The Smith-Lever Act Centennial

May 2014 marked the 100th anniversary of the Smith-Lever Act, legislation that created Cooperative Extension, a nationwide system of community-based education, established as part of each state's land grant university. Cooperative Extension was started to help farmers, homemakers, and youth use the latest university research to improve their lives. At first geared towards strengthening rural areas, Cooperative Extension became integral to urban and suburban communities as well. A century later, Cooperative Extension continues to provide a vital link between public universities and communities.

The Cooperative Extension system was built on the foundation of state land-grant colleges, created by the 1862 Morrill Act, and signed into law by President Abraham Lincoln. The Morrill Act gave each state a grant of land to establish a college that would teach practical subjects such as agriculture and engineering. As envisioned, a key role of land grant institutions was to develop knowledge that would help farmers produce enough food and fiber to meet the needs of a growing nation. Additional legislation, the 1887 Hatch Act, provided land-grant colleges with funds to develop agricultural experiment stations where research was conducted. However, until the passage of the Smith-Lever Act, there was not a consistent way of getting important research-based knowledge from the campuses out to the communities that needed this information.

Authored by Senator Hoke Smith of Georgia and Representative Asbury Lever of South Carolina, the Smith-Lever Act was the culmination of years of advocacy by farm groups and others who believed that rural Americans needed more opportunities and education in order to sustain a vibrant American economy and democracy. Training for farmers on improved agricultural practices was core to this ideal. While there was widespread agreement that a national system of extending agricultural knowledge was necessary, there was less agreement on how to create such a system. Quite a few similar bills had already failed when Sen. Smith and Rep. Lever worked out a successful compromise.

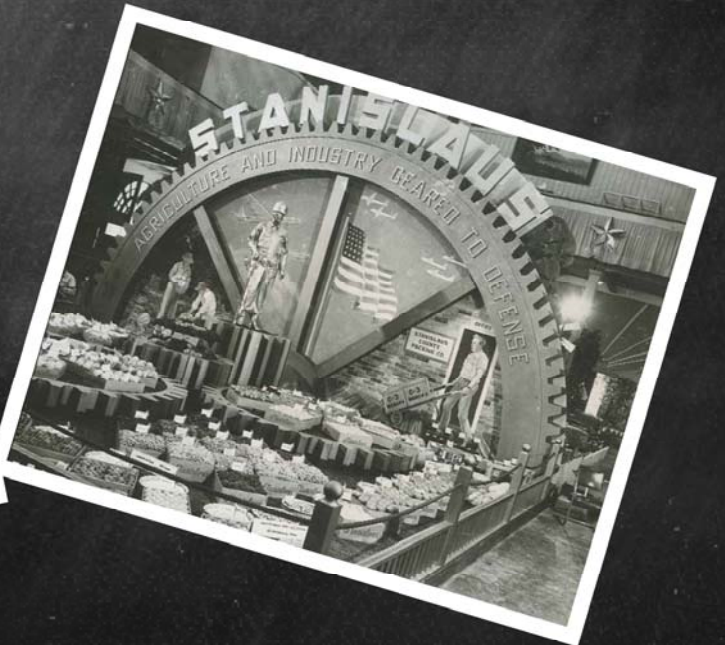
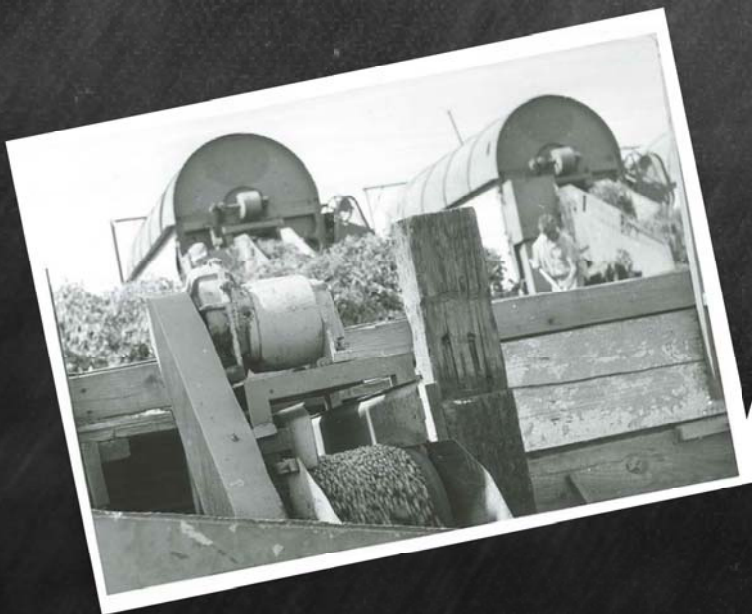
The two legislators developed their bill to create a historic partnership between land-grant universities and the United States Department of Agriculture (USDA). The universities would manage agricultural extension in each state, with guidance from USDA. In addition to providing federal oversight, USDA had an important role to play in formulating the new system. Beginning in 1903, they had developed an innovative system of farmer education known as the Farmer's Cooperative Demonstration Program. Founded by USDA educator Seaman Knapp, this program was based on farmer-led demonstrations, and was popular and successful throughout the south. Knapp's program placed an educator, or "agent," in counties to work with farmers and support their on-farm demonstrations. Smith and Lever's compromise ensured that the county-by-county demonstration method pioneered by Knapp and USDA would become integral to the extension system to be developed by the land-grant universities. The Smith-Lever Act was signed by President Woodrow Wilson on May 8, 1914, and soon, each state's land grant university was organizing Cooperative Extension, or formalizing existing efforts.

A Celebration of Science and Service



In California, efforts were already underway to create an agricultural extension system, building on the success of the state's land grant, the University of California. The first UC campus, at Berkeley, had agriculture as an important early focus, and in 1907, a university research farm was opened in Davisville, a site that grew into a new campus, UC Davis. The same year, UC established the Citrus Experiment Station in Riverside, the foundation for the UC Riverside campus. New knowledge and technologies developed by UC scientists were critical to the growth of farming and allied industries around the state. By the time the Smith-Lever Act became law, UC agriculture faculty were already offering short courses and institutes for farmers around the state, but farmers were clamoring for more. Many California farmers were excited about the possibility of having a Cooperative Extension educator, known as a "farm advisor," assigned to their community.

Anticipating strong demand, University of California officials required each county government that wanted to participate in the Cooperative Extension partnership to allocate funding to help support extension work in that community. Additionally, it was required that a group of farmers in participating counties organize into a "farm bureau" to help guide the farm advisor on the issues of local agriculture. (These grassroots groups later evolved into the California Farm Bureau Federation). In Stanislaus County, the Farm Bureau was established in 1914. Through the efforts of the old Stanislaus County Board of Trade, its president J.W. Davison, and its secretary, Geo T. McCabe, and other directors of that body, an appropriation was made by the Board of Supervisors for the expense of a Farm Advisor. The first president of SCFB was Frank Robertson of Denair, who served during the last portion of 1915 until 1917. The first Farm Advisor was C.M. Conner who arrived in the county in August 1915 and served until November 1917 when he was succeeded by A.A. Jungerman. The first Assistant Farm Advisor, W.A. Kent, was assigned to the county in 1918. A century after the inception of this collaboration between UC, Farm Bureau and counties, county government continues to be a key partner in local delivery of Cooperative Extension.



Fruit and Nut Crops



Category	Year	Harvested Acres	Per Acre	Total	Unit	Per Unit	Total
Almond Meats	2013	160,200	1.21	194,000	Ton	\$ 5,800	\$ 1,125,200,000
	2012	155,114	1.09	169,000	Ton	\$ 4,354	\$ 735,826,000
Almond Hulls	2013			404,000	Ton	\$ 140	\$ 56,560,000
	2012			338,000	Ton	\$ 140	\$ 47,320,000
Almond Shells	2013			202,000	Ton	\$ 22	\$ 4,444,000
	2012			169,000	Ton	\$ 22	\$ 3,718,000
Apples*	2013	615	22.82	14,000	Ton	\$ 530	\$ 7,420,000
	2012	687	22.00	15,100	Ton	\$ 503	\$ 7,595,000
Apricots	2013	4,967	12.00	59,600	Ton	\$ 480	\$ 28,608,000
	2012	4,585	12.00	55,000	Ton	\$ 475	\$ 26,125,000
Cherries	2013	3,189	2.56	8,160	Ton	\$ 3,757	\$ 30,657,000
	2012	3,085	3.80	11,700	Ton	\$ 4,050	\$ 47,385,000
Citrus*	2013	580					\$ 4,263,000
	2012	752					\$ 6,760,000
Grapes, All	2013	12,382					\$ 62,458,000
	2012	13,640					\$ 82,439,000
Red Varieties	2013	7,686	10.26	78,900	Ton	\$ 509	\$ 40,160,000
	2012	8,457	13.90	118,000	Ton	\$ 483	\$ 56,994,000
White Varieties	2013	4,696	10.41	48,900	Ton	\$ 456	\$ 22,298,000
	2012	5,183	10.77	55,800	Ton	\$ 456	\$ 25,445,000
Peaches, All	2013	7,393					\$ 54,150,000
	2012	8,075					\$ 62,490,000
Cling	2013	6,657	18.16	121,000	Ton	\$ 350	\$ 42,350,000
	2012	7,345	22.68	167,000	Ton	\$ 317	\$ 52,939,000
Freestone	2013	736	16.00	11,800	Ton	\$ 1,000	\$ 11,800,000
	2012	730	14.50	10,600	Ton	\$ 901	\$ 9,551,000
Walnuts*	2013	37,435	1.90	71,100	Ton	\$ 3,485	\$ 247,784,000
	2012	38,114	1.86	70,900	Ton	\$ 3,000	\$ 212,700,000
Miscellaneous*	2013	3,104					\$ 23,902,000
	2012	2,880					\$ 17,055,000
TOTAL	2013	229,865					\$ 1,645,446,000
	2012	226,932					\$ 1,249,413,000

*Citrus includes: Grapefruit, Lemons, Oranges, Pomelos and Tangerines (all prices and yields averaged together)

*Miscellaneous includes: Avocados, Berries (Blackberries, Boysenberries, Blueberries & Strawberries), Chestnuts, Figs, Jujube, Kiwi, Nectarines, Olives, Pears, Pecans, Persimmons, Pistachios, Plums, Pluots, Pomegranates, Prunes, Quince and Table Grapes

*Walnuts for 2012 were adjusted from 38,295 acres to 38,114 acres; total value changed from \$213,600,000 to \$212,700,000

*Apples for 2012 were adjusted from \$1,475 per unit to \$503 per unit; total value changed from \$22,273,000 to \$7,595,000

Vegetable Crops



Category	Year	Harvested Acres	Per Acre	Total	Unit	Per Unit	Total
Beans, Succulent	2013	3,329	1.50	4,990	Ton	\$ 1,050	\$ 5,240,000
	2012	3,348	1.25	4,190	Ton	\$ 900	\$ 3,771,000
Broccoli	2013	2,678	5.00	13,400	Ton	\$ 440	\$ 5,896,000
	2012	2,120	5.00	10,600	Ton	\$ 440	\$ 4,664,000
Melons, All	2013	3,235					\$ 25,708,000
	2012	2,561					\$ 18,974,000
Cantaloupe	2013	2,146	18.00	38,600	Ton	\$ 400	\$ 15,440,000
	2012	1,926	18.00	34,700	Ton	\$ 400	\$ 13,880,000
Honeydew	2013	600	20.00	12,000	Ton	\$ 391	\$ 4,692,000
	2012	506	15.18	7,680	Ton	\$ 474	\$ 3,640,000
Melons, Other*	2013	489	34.68	17,000	Ton	\$ 328	\$ 5,576,000
	2012	129	36.09	4,660	Ton	\$ 312	\$ 1,454,000
Pumpkins	2013	286	15.00	4,290	Ton	\$ 300	\$ 1,287,000
	2012	299	20.00	5,980	Ton	\$ 120	\$ 718,000
Squash, All	2013	239	16.50	3,940	Ton	\$ 225	\$ 887,000
	2012	221	18.00	3,980	Ton	\$ 210	\$ 836,000
Sweet Potatoes	2013	1,143	23.00	26,300	Ton	\$ 310	\$ 8,153,000
	2012	1,171	23.00	26,900	Ton	\$ 300	\$ 8,070,000
Tomatoes, All	2013	19,289					\$ 67,692,000
	2012	30,689					\$ 121,148,000
Fresh	2013	832	15.00	12,500	Ton	\$ 555	\$ 6,938,000
	2012	2,360	14.54	34,300	Ton	\$ 440	\$ 15,092,000
Processing	2013	18,457	44.50	821,000	Ton	\$ 74	\$ 60,754,000
	2012	28,329	52.00	1,473,000	Ton	\$ 72	\$ 106,056,000
Miscellaneous*	2013	3,882					\$ 27,621,000
	2012	6,963					\$ 28,726,000
TOTAL	2013	34,081					\$ 142,484,000
	2012	47,372					\$ 186,907,000

*Melons, Other includes: Crenshaw and Watermelon

*Miscellaneous includes: Asparagus, Beets, Bok Choy, Cabbage Green, Cabbage Napa, Celeriac, Cilantro, Collard Greens, Cucumber, Cucumber Pickle, Daikon, Dandelion, Dill, Edible Flower, Endive, Escarole, Fennel, Garlic, Herb Spice, Kale, Kohlrabi, Leek, Lettuce Leaf, Lettuce Romaine, Mint, Mustard, Mustard Greens, Onion Dry, Onion Green, Parsley, Pepper Fruiting, Peppers Fruiting Process, Radicchio, Radish, Rosemary, Sage, Spinach, Sweet Basil, Swiss Chard, Turnip, Vegetable and Vegetable Leaf; Cauliflower and Spinach moved to Miscellaneous category

Field Crops



Category	Year	Harvested Acres	Per Acre	Total	Unit	Per Unit	Total
Beans, Dried All	2013	9,670					\$ 18,252,000
	2012	25,506					\$ 38,309,000
Black-eyes	2013	2,345	1.10	2,580	Ton	\$ 1,000	\$ 2,580,000
	2012	6,764	1.18	7,980	Ton	\$ 1,010	\$ 8,060,000
Baby Limas	2013	1,127	1.63	1,840	Ton	\$ 1,250	\$ 2,300,000
	2012	5,430	1.50	8,150	Ton	\$ 990	\$ 8,069,000
Large Limas	2013	5,932	1.42	8,420	Ton	\$ 1,450	\$ 12,209,000
	2012	12,726	1.33	16,900	Ton	\$ 1,130	\$ 19,097,000
Beans, Dried Other	2013	266	1.40	372	Ton	\$ 1,000	\$ 372,000
	2012	586	1.25	733	Ton	\$ 900	\$ 660,000
Bean Straw	2013			8,240	Ton	\$ 96	\$ 791,000
	2012			25,500	Ton	\$ 95	\$ 2,423,000
Hay, Alfalfa	2013	31,449	7.07	222,000	Ton	\$ 222	\$ 49,284,000
	2012	36,055	7.80	281,000	Ton	\$ 220	\$ 61,820,000
Hay, Oat	2013	31,453	3.19	100,000	Ton	\$ 162	\$ 16,200,000
	2012	33,576	3.17	106,000	Ton	\$ 151	\$ 16,060,000
Hay, Other*	2013	12,691	3.72	47,200	Ton	\$ 172	\$ 8,118,000
	2012	12,290	3.43	42,200	Ton	\$ 188	\$ 7,934,000
Pasture, Irrigated	2013	32,800			Acre	\$ 235	\$ 7,708,000
	2012	33,000			Acre	\$ 196	\$ 6,468,000
Rangeland	2013	422,449			Acre	\$ 20	\$ 8,449,000
	2012	433,000			Acre	\$ 19	\$ 8,227,000
Rice	2013	1,181	3.87	4,570	Ton	\$ 340	\$ 1,554,000
	2012	2,032	4.20	8,530	Ton	\$ 326	\$ 2,781,000
Silage, All	2013	153,758					\$ 152,785,000
	2012	143,714					\$ 148,557,000
Other*	2013	55,334	14.89	824,000	Ton	\$ 39	\$ 32,136,000
	2012	56,317	15.60	879,000	Ton	\$ 39	\$ 34,281,000
Corn	2013	93,595	27.57	2,580,000	Ton	\$ 46	\$ 118,680,000
	2012	82,819	28.29	2,343,000	Ton	\$ 48	\$ 112,464,000
Sudan	2013	4,829	12.00	57,900	Ton	\$ 34	\$ 1,969,000
	2012	4,578	12.00	54,900	Ton	\$ 33	\$ 1,812,000

*Hay, Other includes: Grass, Sudan, Teff, Wheat, and Winter Forage

*Silage, Other includes: Alfalfa (1 cutting), Barley, Grass, Oats, Ryegrass, Sorghum, Triticale, Vetch, Wheat, and Winter Forage

Field Crops continued



Category	Year	Harvested Acres	Per Acre	Total	Unit	Per Unit	Total
Wheat, All	2013	2,898					\$ 3,441,000
	2012	3,957					\$ 4,630,000
Wheat, Grain	2013	2,898	2.91	8,430	Ton	\$ 271	\$ 2,285,000
	2012	3,957	3.05	12,100	Ton	\$ 245	\$ 2,965,000
Wheat, Straw	2013			12,700	Ton	\$ 91	\$ 1,156,000
	2012			18,100	Ton	\$ 92	\$ 1,665,000
Miscellaneous*	2013	2,218			Acre		\$ 2,138,000
	2012	2,385			Acre		\$ 3,070,000
TOTAL	2013	700,567					\$ 267,929,000
	2012	725,515					\$ 297,856,000

*Miscellaneous includes: Barley, Corn Grain, Corn Human Consumption, Oat Grain and Safflower

OTHER AGRICULTURE

Category	Year	Total	Total
All Other Agriculture*	2013		\$ 16,435,000
	2012		\$ 25,801,000

*Other Agriculture includes:

Firewood (orchard prunings and tree removal for firewood), Fuel Cogeneration (orchard prunings and orchard removal for fuel), Compost & Worm Castings (worm castings and all wood and green waste recycling), and Aquaculture (Brown Bullhead, Koi Carp, Spiny Softshell Turtle, White Sturgeon, Stripped Bass, Mosquito Fish, Western Mosquito Fish, Large Mouth Bass, and Channel Catfish)

SEED CROPS

Category	Year	Harvested Acres	Per Acre	Total	Unit	Per Unit	Total
Field Crop*	2013	290					\$ 526,000
	2012	752					\$ 959,000
Other*	2013	154					\$ 248,000
	2012	234					\$ 307,000
TOTAL	2013	444					\$ 774,000
	2012	986					\$ 1,266,000

*Field Crop includes: Cowpea, Dried Bean and Lima Bean

*Other includes: Oat, Onion, Rice, Squash and Tomato

Nursery Products



Category	Year	Field Acres	Quantity Sold	Unit	Per Unit	Total
Deciduous Fruit & Nut Trees/Vines	2013	868	15,470,000	EA	\$ 5.07	\$ 78,433,000
	2012	782	14,030,000	EA	\$ 4.59	\$ 64,398,000
Ornamental Trees & Shrubs	2013	457	2,137,000	EA	\$ 11.87	\$ 25,366,000
	2012	489	1,974,000	EA	\$ 14.50	\$ 28,623,000
Miscellaneous*	2013	783				\$ 38,002,000
	2012	625				\$ 16,411,000
TOTAL	2013	2,108				\$ 141,801,000
	2012	1,896				\$ 109,432,000

*Miscellaneous includes: Christmas Trees, Turf, Evergreen Fruit & Nut Shrubs, Perennials and Vegetable Transplants

ORGANIC PRODUCTS

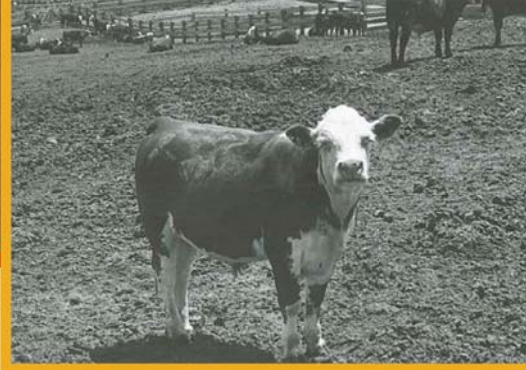
Category	Year	Harvested Acres	Per Acre	Total	Unit	Per Unit	Total
All Organic Products	2013	3,259					\$ 25,243,000
	2012	4,113					\$ 14,572,000

APIARY PRODUCTS

Category	Year	Total	Unit	Per Unit	Total
Beeswax*	2013	513,000	LB	\$3.25	\$ 1,667,000
	2012	478,000	LB	\$3.10	\$ 1,482,000
Honey*	2013	4,401,000	LB	\$1.95	\$ 8,582,000
	2012	4,098,000	LB	\$2.05	\$ 8,401,000
Pollination, Almond	2013	330,000	COL	\$162.45	\$ 53,609,000
	2012	310,000	COL	\$155.00	\$ 48,050,000
Pollination, Misc	2013	New category in 2013			\$ 468,000
Queen Bees	2013	11,250	EA	\$16.00	\$ 180,000
	2012	11,800	EA	\$16.00	\$ 189,000
TOTAL	2013				\$ 64,506,000
	2012				\$ 58,122,000

*Honey and Beeswax are based off of resident colonies plus the value of the colonies during almond pollination season

Livestock and Poultry



Category	Year	Number of Head	Total Live Weight	Unit	Per Unit	Total
Cattle & Calves, All	2013	317,240				\$ 235,460,000
	2012	326,790				\$ 214,217,000
Beef Feeders*	2013	126,839				\$ 37,484,000
	2012	135,740				\$ 34,288,000
Beef Slaughter*	2013	41,250				\$ 13,122,000
	2012	45,800				\$ 17,857,000
Dairy Slaughter*	2013	70,250				\$ 67,785,000
	2012	75,250				\$ 70,722,000
Dairy Replacement	2013	78,901				\$ 117,069,000
	2012	70,000				\$ 91,350,000
Sheep & Lambs	2013	2,893	3,761	CWT	\$ 88.81	\$ 334,000
	2012	1,693	2,200	CWT	\$ 84.00	\$ 185,000
Hogs & Pigs	2013	17,684	27,851	CWT	\$ 78.69	\$ 2,192,000
	2012	31,470	37,800	CWT	\$ 65.00	\$ 2,457,000
Chickens, All	2013	164,359,164				\$ 235,372,000
	2012	184,098,587				\$ 245,771,000
Chickens	2013	47,406,174	283,741,000	LB	\$ 0.71	\$ 201,456,000
	2012	53,045,672	306,186,000	LB	\$ 0.67	\$ 205,145,000
Chicks	2013	116,952,990		EA	\$ 0.29	\$ 33,916,000
	2012	131,052,915		EA	\$ 0.31	\$ 40,626,000
Turkey, All	2013	10,105,515				\$ 31,731,000
	2012	12,267,946				\$ 74,515,000
Turkeys	2013	692,801	18,128,000	LB	\$ 0.93	\$ 16,859,000
	2012	2,636,872	69,306,000	LB	\$ 0.88	\$ 60,989,000
Poult	2013	9,412,714		EA	\$ 1.58	\$ 14,872,000
	2012	9,731,074		EA	\$ 1.39	\$ 13,526,000
Squab	2013	473,675		EA	\$ 5.09	\$ 2,411,000
	2012	509,361		EA	\$ 5.04	\$ 2,567,000
Game Birds*	2013	345,950		EA	\$ 3.42	\$ 1,183,000
	2012	10,676		EA	\$ 2.34	\$ 25,000
Goats*	2013	22,548				\$ 1,521,000
	2012	22,612				\$ 1,664,000
TOTAL	2013					\$ 510,204,000
	2012					\$ 541,401,000

*Beef Feeders includes: Feed Lots, Beef Steers, Beef Heifers, Beef Replacement Heifers, Transient Cattle, Dairy Drop Calves less Replacement Heifers

*Beef Slaughter includes: Beef Cows, Beef Bulls, Dairy Beef

*Dairy Slaughter includes: Spent Cows and Bulls

*Game Birds include: Ducks, Geese, Pheasant, Partridge, Quail and Swans

*Goats includes: Dairy Goat Offspring, Dairy Goat Slaughter and Meat Goats. The 2012 Goat Number of Head was adjusted from 14,040 to 22,612 and the value changed from \$507,000 to \$1,664,000

Livestock and Poultry Products



Category	Year	Total	Unit	Per Unit	Total
Milk, All	2013	43,142,000			\$ 804,419,000
	2012	43,476,000			\$ 739,630,000
Market	2013	41,922,000	CWT	\$18.62	\$ 780,588,000
	2012	43,323,000	CWT	\$17.00	\$ 736,491,000
Manufacturing	2013	1,191,000	CWT	\$19.13	\$ 22,784,000
	2012	127,000	CWT	\$17.00	\$ 2,159,000
Milk, Goat	2013	28,500	CWT	\$36.72	\$ 1,047,000
	2012	26,300	CWT	\$37.27	\$ 980,000
Eggs, Chicken Market	2013	35,969,000	DOZ	\$0.94	\$ 33,811,000
	2012	35,200,000	DOZ	\$0.93	\$ 32,736,000
Eggs, Other*	2013	3,925,000			\$ 5,787,000
	2012	1,512,400			\$ 1,593,500
Wool	2013	34,000	LB	\$1.47	\$ 50,000
	2012	13,500	LB	\$1.60	\$ 21,600
Manure*	2013	571,000	TON	\$7.20	\$ 4,111,000
	2012	674,000	TON	\$6.93	\$ 4,671,000
TOTAL	2013				\$ 848,178,000
	2012				\$ 778,652,000

*Eggs, Other includes: Turkey Hatching, Quail & Duck eggs. Totals listed separately in 2012 and combined in 2013



Summary of Categories



Category	Year	Harvest Acreage	Total
Fruit and Nut Crops*	2013	229,865	\$ 1,645,446,000
	2012	226,932	\$ 1,249,413,000
Vegetable Crops	2013	34,081	\$ 142,484,000
	2012	47,372	\$ 186,907,000
Field Crops	2013	700,567	\$ 267,929,000
	2012	725,515	\$ 297,856,000
Other Agriculture	2013		\$ 16,435,000
	2012		\$ 25,801,000
Seed Crops	2013	444	\$ 774,000
	2012	986	\$ 1,266,000
Nursery Products	2013	2,108	\$ 141,801,000
	2012	1,896	\$ 109,432,000
Organic Products	2013	3,259	\$ 25,243,000
	2012	4,113	\$ 14,572,000
Apiary Products	2013		\$ 64,506,000
	2012		\$ 58,122,000
Livestock and Poultry*	2013		\$ 510,204,000
	2012		\$ 541,401,000
Livestock and Poultry Products	2013		\$ 848,178,000
	2012		\$ 778,652,000
TOTAL	2013	970,324	\$ 3,663,000,000
	2012	1,006,814	\$ 3,263,422,000

*2012 Fruit & Nut Crops was adjusted from 227,113 acres to 226,932 acres and the total value changed from \$1,264,991,000 to \$1,249,413,000 due to the adjustments in the walnut acreage and the per unit price for apples

*2012 Livestock and Poultry total value was adjusted from \$540,244,000 to \$541,401,000 due a correction in number of goats

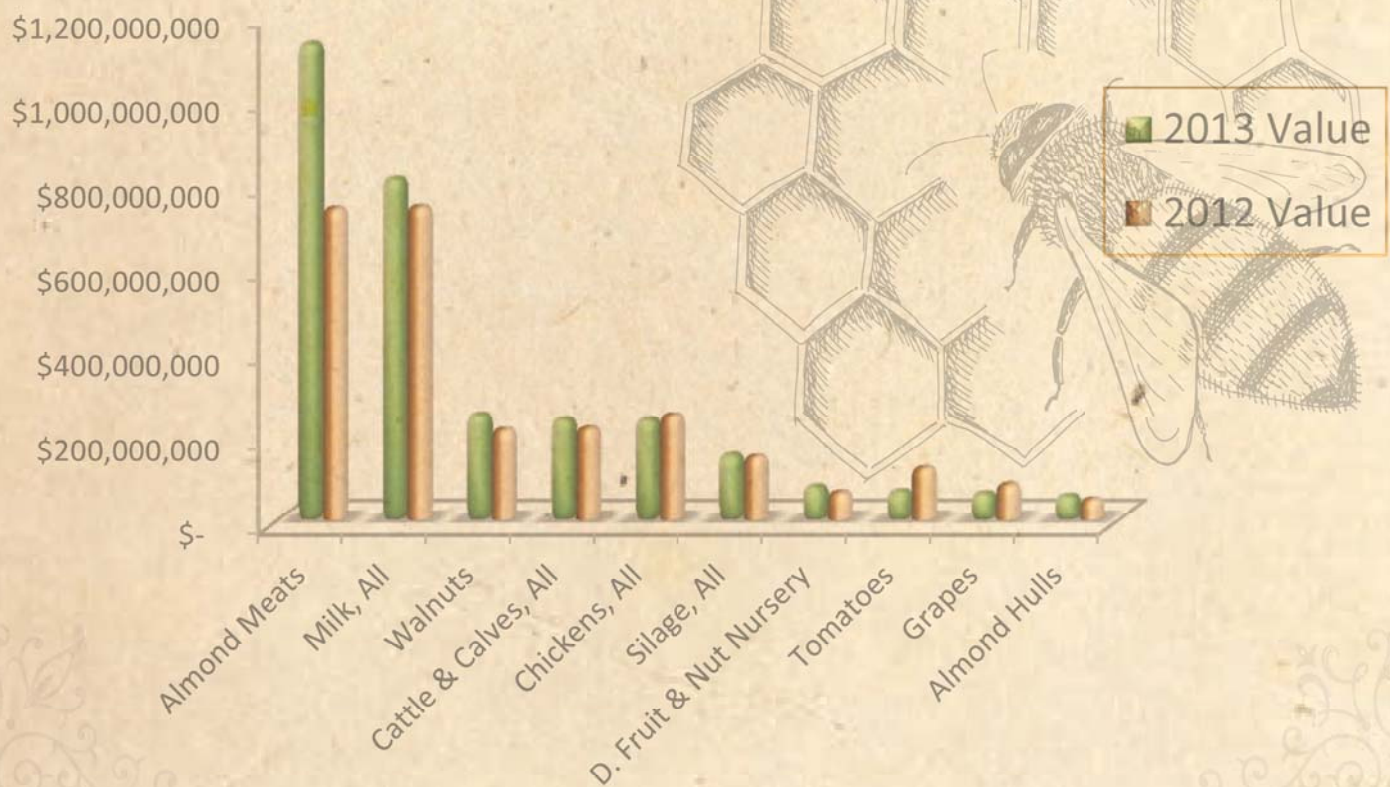
50 YEARS OF PRODUCTION SUMMARY TOTALS

1964-167,878,000	1974-409,538,000	1984-794,623,000	1994-1,115,316,000	2004-1,978,434,000
1965-165,546,000	1975-397,311,000	1985-787,142,000	1995-1,115,492,000	2005-1,977,595,000
1966-192,813,000	1976-423,761,000	1986-790,764,000	1996-1,254,633,000	2006-2,148,152,000
1967-193,723,000	1977-501,367,000	1987-881,306,000	1997-1,316,942,000	2007-2,421,650,000
1968-199,311,000	1978-533,376,000	1988-957,568,000	1998-1,302,714,000	2008-2,473,843,000
1969-220,454,000	1979-706,595,000	1989-963,891,000	1999-1,210,211,000	2009-2,312,669,000
1970-237,210,000	1980-743,584,000	1990-1,038,356,000	2000-1,197,302,000	2010-2,572,434,000
1971-243,287,000	1981-781,185,000	1991-1,070,154,000	2001-1,353,300,000	2011-3,069,823,000
1972-269,541,000	1982-743,637,000	1992-1,073,930,000	2002-1,367,971,000	2012-3,263,422,000
1973-379,530,000	1983-720,740,000	1993-1,147,140,000	2003-1,454,932,000	2013-3,663,000,000

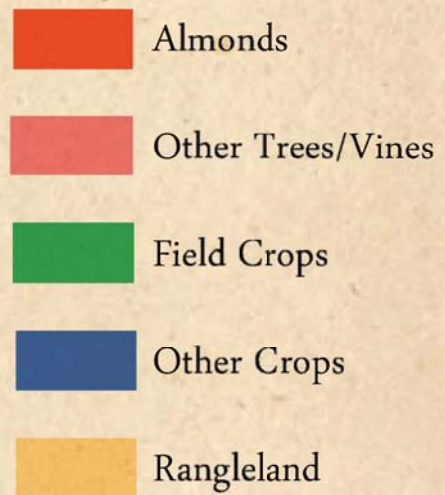
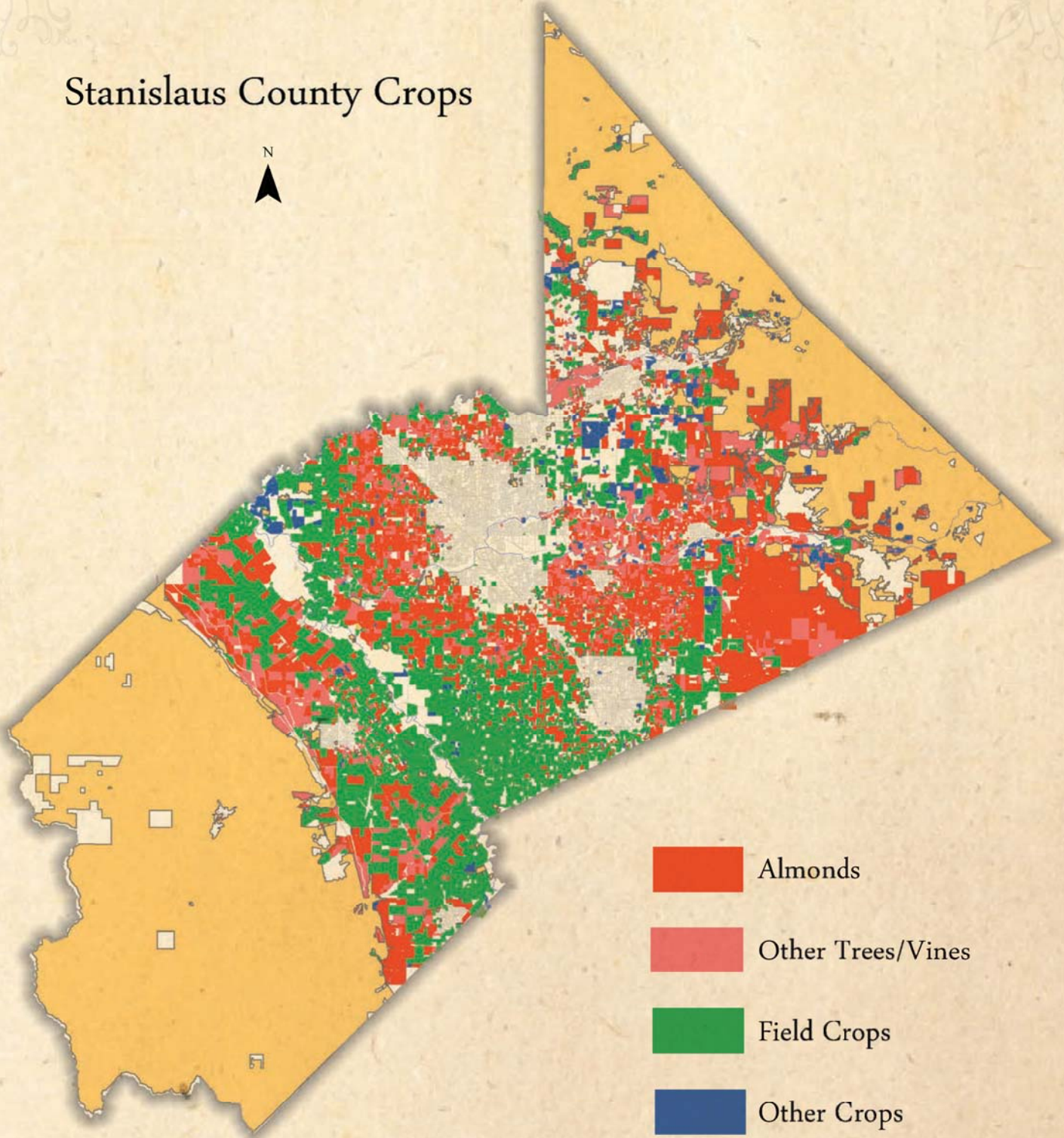
Top Ten Commodities

Category	2013 Rank	2013 Value	2012 Rank	2012 Value
Almond Meats	1	\$1,125,200,000	2	\$735,826,000
Milk, All	2	\$804,419,000	1	\$739,630,000
Walnuts*	3	\$247,784,000	5	\$212,700,000
Cattle & Calves, All	4	\$235,460,000	4	\$214,217,000
Chickens, All	5	\$235,372,000	3	\$245,771,000
Silage, All	6	\$152,785,000	6	\$148,557,000
Deciduous Fruit & Nut Nursery	7	\$78,433,000	10	\$64,398,000
Tomatoes, All	8	\$67,692,000	7	\$121,148,000
Grapes, All	9	\$62,458,000	8	\$82,439,000
Almond Hulls	10	\$56,560,000	15	\$47,320,000

*Walnuts were adjusted for 2012 from \$213,600,000 to \$212,700



Stanislaus County Crops



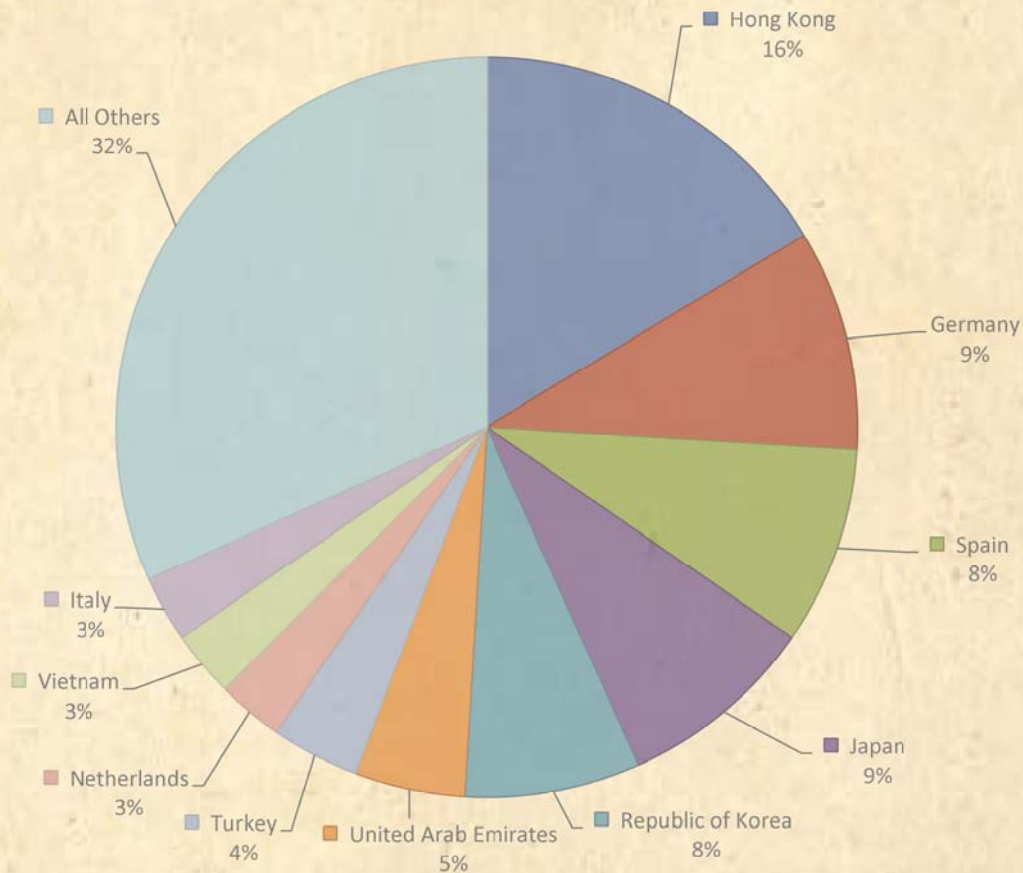
In 2013, Stanislaus County Issued 8,939 Export Certificates for 133 Commodities

Exports to 102 Countries

Afghanistan	Cyprus	Indonesia	Mexico	Spain
Algeria	Czech Republic	Iran, Islamic Republic of	Morocco	Sri Lanka
Argentina	Denmark	Iraq	Netherlands	Sudan
Australia	Dominican Republic	Ireland	New Caledonia	Sweden
Austria	Ecuador	Israel	New Zealand	Switzerland
Azerbaijan	Egypt	Italy	Nicaragua	Syrian Arab Republic
Bahrain	El Salvador	Jamaica	Norway	Taiwan
Barbados	Estonia	Japan	Oman	Thailand
Belgium	Ethiopia	Jordan	Pakistan	Trinidad and Tobago
Belize	Finland	Kazakhstan	Panama	Tunisia
Bosnia and Herzegovina	France	Korea, Republic of	Peru	Turkey
Brazil	French Polynesia	Kuwait	Philippines	Ukraine
Bulgaria	Germany	Latvia	Poland	United Arab Emirates
Burkina Faso	Greece	Lebanon	Portugal	United Kingdom
Canada	Guatemala	Libya	Romania	Uruguay
Chad	Guyana	Lithuania	Russian Federation	Venezuela, Bolivarian
Chile	Honduras	Macedonia, Former Yuhoslav	Saudi Arabia	Republic of
China	Hong Kong	Republic of	Serbia	Viet Nam
Colombia	Hungary	Malaysia	Singapore	Yemen
Costa Rica	Iceland	Malta	Slovenia	Zimbabwe
Croatia	India	Mauritius	South Africa	



2013 Top Exports by Country



2013 PEST EXCLUSION PROGRAM ACTIVITIES

1,862 incoming shipments of plant material were inspected at nurseries and shipping terminals for exotic, invasive agricultural pests and quarantine documentation compliance.

154,000 Bee Colonies were inspected after arriving from outside of the state for Red Imported Fire Ant and other quarantine pests.

8,939 Phytosanitary Certificates were issued for agricultural commodities being exported to foreign countries.

395 Origin Certificates were issued for nursery stock being exported to other counties within California.

1,703 acres of Production Nursery Stock were surveyed for compliance with pest cleanliness and quality standards.

12 Feed Grain Mills were inspected, sampled and certified to clean weed seed from feed grain arriving from outside of our county.

Pest Detection & Emergency Projects 2013

To protect the agricultural and horticultural industries in Stanislaus County, various traps are placed to monitor for specific insects. Trapping allows for the possible early detection of invasive and destructive pests that would be detrimental to our economy, the environment, and our health.



Melon Fruit Fly

Traps Deployed: 221

Trap Servings: 2,394

Crops Affected:

Peach, orange, bean, tomato, cucumber, apple, cantaloupe, grape, pear, and watermelon



Mediterranean Fruit Fly

Traps Deployed: 439

Trap Servings: 5,707

Crops Affected:

Walnut, tomato, apple, almond, plum, peach, nectarine, pear, grape, citrus, fig, pomegranate, and olive



Oriental Fruit Fly

Traps Deployed: 439

Trap Servings: 5,707

Crops Affected:

Apple, citrus, cucumber, fig, grape, pear, pomegranate, stone fruit, tomato, and walnut



Mexican Fruit Fly

Traps Deployed: 221

Trap Servings: 5,746

Crops Affected:

Apple, apricot, citrus, pear, plum, peach, nectarine, and pomegranate



Gypsy Moth

Traps Deployed: 204

Trap Servings: 612

Crops Affected:

Most trees



Apple Maggot

Traps Deployed: 53

Trap Servings: 689

Number of Finds: 2

Crops Affected:

Stone and pome fruit



Japanese Beetle

Traps Deployed: 204

Trap Servings: 612

Crops Affected:

Turf and roses



Glassy-Winged Sharpshooter

Traps Deployed: 1,893

Trap Servings: 30,259

Crops Affected:

Grape, almond, peach, and citrus (vector for Pierce's Disease)



Asian Citrus Psyllid

Traps Deployed: 706

Trap Servings: 2,740

Crops Affected:

Citrus



Vine Mealybug

Traps Deployed: 53

Trap Servings: 1,131

Crops Affected:

Grapes



European Grapevine Moth

Traps Deployed: 15

Trap Servings: 218

Crops Affected:

Grapes and spurge laurel



European Corn Borer

Traps Deployed: 8

Trap Servings: 108

Crops Affected:

Corn, potatoes, oat, green beans, and rhubarb



Red Imported Fire Ant

Sites Surveyed: 871

Samples Taken: 403

Crops Affected:

May infest agricultural and residential settings, as well as natural habitats-dangerous to children, pets, the elderly, and wildlife



Light Brown Apple Moth

Traps Deployed: 437

Trap Servings: 5,681

Crops Affected:

Alfalfa, almond, apple, berries, broccoli, citrus, corn, grape, olive, stone fruit, and tomatoes

Stanislaus County Certified Farmers' Markets



CERES FARMERS MARKET

Location: **Caswell Elementary** -

1800 N. Central Ave, Ceres

Days & Time: Mondays, 2:00PM-6:00PM

(Apr-Jun & Aug-Mar)



Location: **Hidahl Elementary** - 2351 Redwood Rd, Ceres

Days & Time: Thursdays, 2:00PM-6:00PM

(Apr-Jun & Aug-Mar)

Location: **Whitmore Charter** - 3435 Don Pedro Rd, Ceres

Days & Time: Tuesdays, 2:00PM-6:00PM

(Jan-Jun & Aug-Dec)

Location: **Sinclair Elementary** - 1211 Hackett Rd, Ceres

Days & Time: Wednesdays, 2:00PM-6:00PM

(Apr-Jun & Aug-Mar)

Location: **LaRosa Elementary** -

2800 Eastgate Blvd, Ceres

Days & Time: Tuesdays, 2:00PM-6:00PM

(Apr-Jun & Aug-Mar)

Location: **Virginia Parks Elementary** -

1021 Moffett Rd, Modesto

Days & Time: Thursdays, 2:00PM-6:00PM

(Apr-Jun & Aug-Mar)

MODESTO CERTIFIED FARMERS MARKET

Location: 16th Street between H & I Streets, Modesto

Days & Time: Thursdays and Saturdays,

7:00 AM - 1:00PM (Apr-Dec)

Location: **Vintage Faire Mall** - 3401 Dale Rd, Modesto

Days & Time: Sundays, 10:00AM - 2:00PM

(Jun-Oct)

OAKDALE FARMERS MARKET

Location: Downtown Oakdale,

N. Third Ave, between E & F Streets

Days & Time: Wednesdays, 5:00PM - 8:30 PM

(Jun-Aug)

RIVERBANK CHAMBER OF COMMERCE FARMERS MARKET

Location: Corner of Santa Fe & 7th Street, Riverbank

Days & Time: Wednesdays, 5:00PM - 8:00PM

(May-Aug)

SUNBLEST VALLEY CERTIFIED FARMERS MARKET

Location: 1040 W Las Palmas, Patterson -

True Value Shopping Ctr

Days & Time: Wednesdays, 4:00PM - 8:00 PM

(May-Sep)

TURLOCK CERTIFIED FARMERS MARKET

Location: Corner of Main & Broadway, Turlock

Days & Time: Fridays, 8:00AM - 1:00PM

(May-Oct)

STANISLAUS GROWN CERTIFIED FARMERS MARKET

Location: Sciabica's Olive Oil,

2150 Yosemite Blvd, Modesto

Days & Time: 2nd & 4th Tuesdays of the month,

3:00PM - 7:00PM



