

Who We Are

The office of the Agricultural Commissioner and Sealer of Weights and Measures is a regulatory agency acting under the jurisdiction and direction of the California Department of Food and Agriculture, the Department of Pesticide Regulation, and the Division of Measurement Standards and in cooperation with various other federal, state, and local agencies.

What We Offer

The Agricultural division is charged with the oversight of pesticide application, storage of agricultural products and certification of exports, prevention of the entry and spread of harmful insects, weeds, and plant disease and the certification of agricultural product quality. The Weights & Measures Division is responsible for certifying weighing and measuring devices for consumer protection and performing quantity controls and price verification inspections.



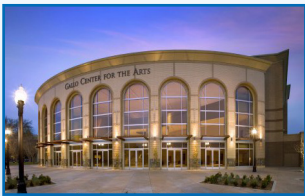
The Agricultural Commissioner/Sealer

The County Agricultural Commissioner and Sealer of Weights and Measures is an official Department Head appointed by the County Board of Supervisors. This position is appointed to a four-year term and reports directly to the Chief Executive Officer and the Board of Supervisors.

The Stanislaus County Agricultural Commissioner/Sealer is responsible for the implementation of laws and regulations designed to support and protect the well being of agriculture, business and the community. This leadership position is responsible for the overall operation of the Agricultural Commissioner's office. This individual administers, directs and coordinates the activities of the office and carries out the objectives of the Board in providing services. This individual also plans, directs, and implements programs for enforcing local, state and federal laws relating to agriculture and weights and measures.

Stanislaus County is a Great Community

We have beautiful parks, great education, outstanding healthcare and a variety of cultural and sporting events. Our community features music, art, festivals, golf, river rafting, boating & much more. Stanislaus County offers an energetic community to call home at affordable prices. It is a wonderful place to raise a family while offering entertainment opportunities of all kinds. Visit "Live & Play" at www.stancounty.com to find out more.



We are Proud of Our Diverse Heritages

By bringing various viewpoints and expertise together in the spirit of fairness and respect, we make our team stronger. We believe that every position is crucial and interconnected, and that the triumphs of the individual are the successes of us all.

Making a Meaningful Contribution

Every member of the Stanislaus County Team makes a meaningful contribution to the community each day they come to work. For us, active citizenship in promoting the health, safety, welfare, and economic vitality of our community isn't just an opportunity, it's a responsibility. For current employment opportunities visit www.stanjobs.org



Where The Best Go to Get Better!

Stanislaus County is a Learning Organization, committed to promoting the continuous development and advancement of its team. Our motto at the County is "Striving Together to be the Best" and that is a vision we hope you will share with us.



STANISLAUS COUNTY
Agricultural Commissioner
& Weights and Measures



3800 Cornucopia Way Suite B
Modesto, CA 95358

Phone: (209) 525-4730
Fax: (209) 525-4790
Email: Agcom50@stancounty.com
Web: www.stanag.org



Weights and Measures

The function of the Weights and Measures Department is to protect the interests of the buyer and seller, ensuring honesty and integrity of everyday business transactions. Any commodity whether bought, sold, traded, bartered, etc., can be checked by weights and measures.

Devices

Devices include gas pumps, taximeters, vehicle scales, electric meters, livestock scales, jewelry scales, gas meters, farm milk tanks, and scales in the checkout lane of the grocery store. All such devices are tested for accuracy and inspected to determine if they are appropriate for their intended use. Once that is determined, the inspector certifies the device by affixing a paper seal to it.



WEIGHTS AND MEASURES

Quantity Control

Inspections are done on packaged goods to determine if the proper weight, measure, count, and labelling requirement is being used. Test purchases are made throughout the county in order to determine if customers are being charged the advertised price. Consumer complaints are investigated in this same manner.



\$27.99
47 1/4in x 95 1/4in Cedar Lattice
Nominal Reference Size 4 x 8
47 1/4 x 95 1/4
Item # 1234



Service Agents

Persons that sell, rent, install, service, or repair commercial weighing and measuring devices are required to be licensed with the Division of Measurement Standards (DMS). Agents must report their work to county weights and measures officials.



Petroleum Products

Weights and measures officials enforce that portion of the California Business and Professions Code relating to petroleum product quality standards. Labelling regulations are strictly enforced to provide product identity and information. Undercover purchases are made to investigate consumer complaints and to inspect the accuracy of the transactions. This method is also used in taking samples to ensure product compliance with national standards.



Weighmaster

Weighmasters are persons who are licensed by the California Division of Measurement Standards to certify the weighed, measured, or counted quantity of any commodity. County weights and measures inspectors ensure the correctness of the certificates issued.



“First Line of Defense Against Invasion of Exotic Pests”

Pest Exclusion

This program provides the first line of defense for agriculture and the environment against the invasion of exotic pests.

The establishment of new pests may adversely affect our natural environment and the economy. Inspection of incoming shipments at UPS, FedEx, and garden centers of retail businesses is combined with inspections of local nurseries. Incoming beehives are also inspected for hitchhiking pests.

This program also involves inspection of plant material being delivered to other states and countries and the issuance of certificates documenting compliance with their entry requirements. This allows growers to ship their products throughout the world.



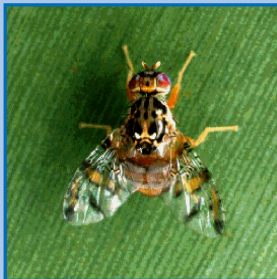
Phytosanitary Export Certification

The Department, working under the auspices of the United States Department of Food and Agriculture, inspects product destined for export to ensure that it meets all of the requirements of the country of destination and is free from pests. If all requirements are met, a Phytosanitary Certificate is issued which allows the product to reach its final destination. No raw agricultural product may be exported without these inspections taking place.



Pest Detection Trapping

This program provides the second line of defense against newly introduced exotic pests. Traps are placed in primarily urban areas to detect such insect pests as Mediterranean and Mexican fruit flies, Gypsy Moth, Japanese Beetle, Light Brown Apple Moth, and a host of other targeted pest species. Through early detection, the cost and environmental impact of eradication is minimized. The Phytosanitary Certificates issued by the Department are often predicated on the “Free From” status that is established through the Pest Detection trapping program.



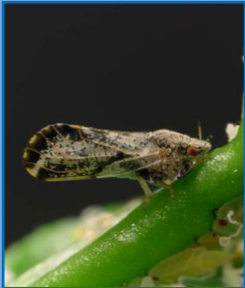
Pesticide Use Enforcement

This is a complex program that covers far more than its name implies. This program was developed to provide for the proper, safe, and effective use of pesticides essential for production of food and fiber and for protection of the public health and safety. The Department, working in conjunction with the California Department of Pesticide Regulation, monitors the purchase, storage and use of pesticides in the county to ensure adherence to label requirements and to enforce laws and regulations concerning worker safety and the environment. Other components of the program include issuance of restricted materials permits, pesticide use reporting, incident investigations, outreach activities promoting best management practices, and monitoring applications in the field.



Pest Management

Partnered with the California Department of Food and Agriculture, the County Agricultural Commissioner is charged with managing nuisance pests of agriculture and human health. Many of these pests are recently introduced species that have become established in the state despite the best efforts to keep them out.



Seed Certification

Inspections are performed at the retail and wholesale establishments that sell seeds. Samples are drawn for germination and purity testing. Labelling is inspected for compliance with state requirements. Through this program, certification services are also performed for growers and processors in cooperation with the California Crop Improvement Association.



Nursery Inspection

Through this program, the County Agricultural Commissioner inspects the growing, propagation, production and sale of nursery stock to assure cleanliness from pests, true variety and vigorous healthy plants for sale to the consumer.



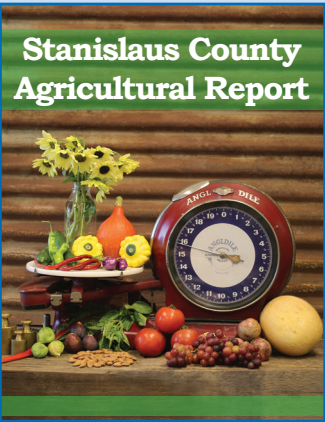
“Valuable Information to the Local Economy”

Crop Statistics

As required by the California Food and Agricultural Code, the County Agricultural Commissioner compiles and records information in the annual crop report regarding the gross production and value of the county’s commodities.

Various research institutions, schools, banks, agencies and businesses use this valuable information to the benefit of the local economy. Also, disasters to agriculture are surveyed and the information collected is used by other agencies offering disaster relief.

Statistics promote and protect the continued production and prosperity of agriculture in California and provide a tangible representation of the importance and diversity in California agriculture.



Pest Eradication

Pest eradication programs are often conducted following the discovery of an introduced pest species. Often these projects are partially or completely under the jurisdiction of the California State Department of Food and Agriculture. However, the County Agricultural Commissioner is often involved, and acts as the liaison to local government.



Fruits, Nuts and Vegetable Standardization

This program ensures compliance with California’s minimum standards regarding quality and marketing of all produce commercially grown and/or marketed in the state. The Agricultural Commissioner is also responsible for the certification of producers of agricultural products sold at certified farmers’ markets, the certification of those markets, and the registration of organic farmers.



Apiary Inspection

This program emphasizes the registration and site location of honeybee colonies in the county. At the request of beekeepers or growers, the County Agricultural Commissioner inspects colonies for strength and health to ensure effective pollination.