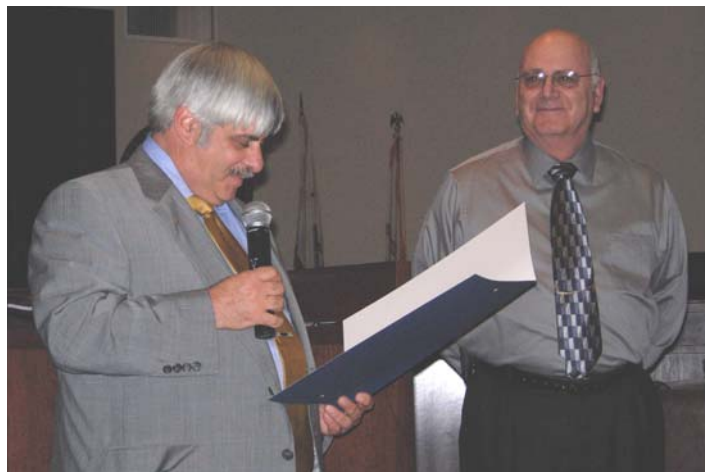




## *Ag Commissioner Earns Equal Rights Award*

### Inside this issue:

<i>The Buzz About Bee Inspections</i>	2
<i>World's Tallest Corn?</i>	2
<i>Denny Hoeb, New Ag Manager</i>	3
<i>Ag Container Recycling—Guess How Many?</i>	3
<i>Back in Time—County Exhibits at the State Fair</i>	4
<i>CRV—A “Green” Thing to Do</i>	5
<i>2007 Crop Report Questionnaire</i>	6



Stanislaus County Supervisor Jim DeMartini reads the Resolution commending Ag Commissioner Dennis Gudel for being selected as the 2006 Annual Equal Rights Award recipient and for his work in promoting equal rights at the award ceremony held on October 17, 2007.

Along with Stanislaus County Assessor Doug Harms, Agricultural Commissioner Dennis Gudel was selected by the Equal Rights Commission to receive the 2006 Equal Rights Award. The Board of Supervisors recognized Gudel for serving the increased diversity of farmers and ranchers in the County and for assuring that the employee makeup of his office mirrors that of the community.

It was noted that Dennis seeks to serve the multilingual community of Stanislaus County by maintaining information in understandable formats to educate and enforce safety on pesticide use, proper produce scales and other agricultural rules and regulations. The resolution stated that Dennis’ unique qualities make him effective in addressing all of his responsibilities and that he always seeks to do the right thing.

We hope you enjoy our quarterly newsletter.

Our goal is to provide useful and informative news to our customers.

We welcome your feedback on this issue.

Contact us:

Agcom50@stancounty.com

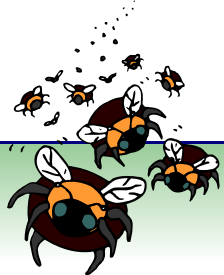
(209) 525-4730

## *’Tis the “Season” for Pesticide Permits*



Between hanging mistletoe and buying holiday gifts, growers in Stanislaus County also need to make sure that their pesticide permits will be current in 2008. Growers whose last names begin with the letters “I” through “Q” will need to call the Ag Commissioner’s Office to set up an appointment to renew their permit. In

order to be eligible, the grower must have earned at least six hours of Continuing Education credit. Growers who have rotational crops need to renew their permit each year. If you have any questions, or to schedule an appointment, please call our office at (209) 525-4730.



# The Buzz on Bee Inspections



**Kamal Bagri**  
Deputy Ag  
Commissioner

**P**ollination season is approaching soon and Stanislaus County is receiving bee shipments from all over the country. Each bee shipment coming out of the state requires two inspections. The first inspection is conducted at the border station by California Department of Food and Agriculture (CDFA) inspectors and the second inspection is conducted by the county of destination. These inspections are very important because any hitchhiking pests like Red Imported Fire Ant (RIFA) and/or noxious weeds are often found associated with bee colonies.

Stanislaus County Agricultural Commissioner's Office has implemented an extensive bee shipment inspection program due to the recent finds of RIFA in the County. When any bee shipment destined for Stanislaus

County crosses the California border, the Agricultural Commissioner's office is notified by the border station. All bee shipments coming under this "Quarantine Hold Notice" are required to be inspected by our office and the bee keeper is required to call our office before off-loading the bees. When this notification is received by us, the bee keeper is contacted by the inspector and an appointment is scheduled for an inspection to ensure that the bees can be off-loaded as soon as possible. Our staff is also available during the weekends to do these inspections.

The California Department of Food and Agriculture has implemented a voluntary certification program. Shipments entering Stanislaus County with certification issued by the regulatory official in the state of origin, stating that the shipment is free of RIFA and other

pests can be off-loaded in the absence of a County inspector.

Bee keepers should ensure that the truck driver provides precise destination information including the exact physical address of the location where the colonies will be placed. This will help CDFA to route the hold notice to the appropriate county and will help expedite the inspection process.



*Agricultural/Weights & Measures Inspector Forrest Meares snapped this self-portrait during a recent bee inspection.*



## World's Tallest Corn?



Not exactly the world's tallest corn, but the featured photos depicting corn over 20 feet high were found in the Ag Commissioner's archives and were taken in 1941. A typical corn plant grows from 5 to 12 feet tall but according to Ripley's Believe it or Not, the world's tallest cornstalk was 31 feet, 3 inches.

In 1941, Stanislaus County growers produced 4,820 tons of silage corn. Compare this to the 2006 production of over 1.5 million tons. Most of this silage produced is consumed by dairy cows.

## Denny Hoeh, New Ag Manager



Denny Hoeh  
Ag Manager

When Stanislaus County hired me as a part-time temporary inspector in June of

1978, I'm sure no one expected me to still be here in 2007. I had just graduated from California State University at Stanislaus in Environmental Studies with a minor in Biology, and my first assignment was working with a program that coordinated the efforts of the Agricultural community, the food processing industry, waste haulers, and the County to find a home for the fruits and vegetables that do not make it into the can.

In February 1980, a full-time position came up in the air pollution pro-

gram—this was when Stanislaus County had its own program, and I was officially hired as a permanent County employee in the Department of Environmental Resources. Since that time I have worked in various programs for the County, but always with the Agricultural community being an important part of the work. For the past 15 years I have been in charge of the program that I helped start in 1978. Each year around 300,000 tons of food processing by-products goes through the Stanislaus County program to make sure it is recycled and reused in an environmentally beneficial way.

During the past 29 years I have not only enjoyed being a County employee but also raised three children who have now gone on through college and are married. I presently have four grandchildren—two grandsons and two granddaughters—and recently my wife and I celebrated our

33<sup>rd</sup> wedding anniversary. I have been active in several community organizations including being a project leader in 4-H for many years, serving on both local and State American Lung Associations Boards, being a Boy Scout leader on the local, District, and Council level, and holding various leadership positions in my Church.

Recently a position of a Manager I in the Department of Agriculture & Weights and Measures became available and I was able to make the change. The position is over the pesticides program working with a great team of County employees to help Stanislaus County meet the Federal, State and local requirements on pesticide application. I am truly looking forward to this change in my career and working even closer with our vitally important Agricultural community.

### Can You Guess How Many Containers?



If you guessed 53,000 containers, then you are correct! That's how many rinsed pesticide containers were recently dropped off at our recycling collection event on November 1st. The Ag Commissioner's Office partnered with Stanislaus Farm Supply (where the event was

held), and Interstate Ag Plastics, who performed the recycling. The recycling of used pesticide containers was free and demonstrates good environmental stewardship. Thank you to all who participated. Be on the lookout for another recycling opportunity in 2008!

## Stanislaus Exhibits at the State Fair

In 1854, the first California Exposition and State Fair was held in San Francisco where the exhibition of horses, cattle, mules, and agricultural and mechanical productions promoted the new state's growing agricultural industry. Now in Sacramento, each year California counties contribute a unique exhibit touting their attractions and commodities. Featured are photos of Stanislaus County's exhibits at the State Fair for several years during the 1950's. From the mid 1930's to the early 70's, it was the responsibility of the Agricultural Commissioner's Office to produce these displays. For a look at the 2007 Stanislaus County exhibit produced by Gaffney Design, please see page 6.



California State Fair  
Stanislaus Exhibit  
1953  
"Peaches and Cream"

This exhibit featured a suspended creamer pouring into a larger-than-life bowl of peaches. Peaches were a prevalent crop in Stanislaus in 1953 with 167,787 tons produced for a value near \$11 million. Compare this with 9,020 tons of peaches in 2006. However, the 2006 value held at over \$62 million and ranked as the County's #6 Crop.



California State Fair  
Stanislaus Exhibit  
1956

"The Magic of Climate, Water and Soil Perform Miracles in Stanislaus"

According to an article in the Turlock Journal, "The head of a genie, appearing in a cloud of smoke arising from a magic lantern, is the focal point in the Stanislaus County prize winning booth."



California State Fair — Stanislaus Exhibit — 1957 "Agriculture and Industry Geared to Defense"

State Fair models were employed to adorn and advertise this fair exhibit while it was under construction. The theme was designed to emphasize the meshing of agriculture and industry for defense. The finished exhibit featured agricultural products instead of models.

# "CRV" - A "Green" Thing to Do



Dan Bernaciak  
Deputy Sealer of  
Weights & Measures



Recycling—a good thing to do for the environment—and who couldn't use a little extra cash?

As of July 1, 2007, the California Refund Value (CRV), the amount a consumer pays per container at purchase, went to \$0.05 for containers less than 24 ounces and \$0.10 for containers of 24 ounces or more.

In California, beverage container recycling is administered by the Department of Conservation, Division of Recycling. They estimate that 20 billion recyclable beverage containers were purchased in California last year, of which 12 billion were recycled.

Weights and Measures involvement in recycling includes checking the accuracy of the scales used by recycling centers. Other requirements include the positioning of the scale so

that the indicator is visible to the customer during the transaction and that the scale is suitable for the amount of product being weighed. It is not acceptable to weigh 3 pounds of containers on a scale that reads in 1-pound increments. Weights and Measures also responds to consumer complaints about the accuracy of payments received when redeeming recyclables.

The Division of Recycling sets the minimum reim-

"The Division of Recycling estimates that 20 billion recyclable beverage containers were purchased in California last year, of which 12 billion were recycled."

- Did You Know?**
- ⇒ Reimbursement rates are set by the Division of Recycling and are based on an average of the types of containers being recycled, so payment based on weight may not equal the CRV value multiplied by the number of containers.
  - ⇒ California law requires that a recycling center redeem CRV containers by count if the consumer requests this method of payment. The law limits the amount of containers that must be redeemed by count to 50 of each type of container (aluminum, plastic, glass). (A recycling center may redeem more than 50 containers of each type by count but they are not required to do so.)

bursement rates paid for recyclables. These rates are currently \$1.55 per pound for CRV aluminum and \$0.89 per pound for CRV PET 1 plastic, the type of plastic used for water and soft drink bottles. These rates are based on statewide surveys of the containers brought to recycling centers and include all sizes of containers.

A complaint often received by Weights and Measures is that the consumer doesn't believe they received the correct payment for the amount of material they recycled. When receiving a complaint, Weights and Measures will conduct an undercover test sale using a documented amount of recyclable material to determine the accuracy of the transaction.

It is important to keep in mind that because the Division of Recycling sets the reimbursement rates based on an average of the types of containers being recycled, so the payment based on weight may not equal the CRV value multiplied by the number of containers. Our office conducted a test re-

cently, weighing 100, 16.9 ounce water bottles. All of the containers were from the same brand of bottled water. The weight of the 100 bottles multiplied by the established redemption rate of \$0.89 per pound generated a payment of \$2.94 while the amount of CRV paid at time of purchase of the containers was \$5.00 (100 containers x \$0.05).

California law requires that a recycling center redeem CRV containers by count if the consumer requests this method of payment. The law limits the amount of containers that must be redeemed by count to 50 of each type of container (aluminum, plastic, glass). A recycling center may redeem more than 50 containers of each type by count but they are not required to do so.

*If you have questions on recycling, the Division of Recycling may be contacted at 1-800-RECYCLE. If you feel you have not received the correct payment for your recyclables, please contact our office at 209-525-4730.*

**Stanislaus County  
Department of Agriculture and  
Weights and Measures**

3800 Cornucopia Way Suite B  
Modesto CA 95358  
Phone: 209-525-4730  
Fax: 209-525-4790  
Email: [agcom50@stancounty.com](mailto:agcom50@stancounty.com)

Publication Design/Coordination:  
Cynthia Darmstandler  
Email: [cynthiad@stancounty.com](mailto:cynthiad@stancounty.com)

**WE'RE ON THE WEB!**  
[WWW.STANAG.ORG](http://WWW.STANAG.ORG)

Our Mission:  
Support and  
protect the well-  
being of  
Agriculture,  
Business and the  
Community.



California State Fair  
Stanislaus Exhibit  
2007

*Stanislaus County  
garnered the Gold  
Award this year  
with their 50's  
style "Cruisin'  
Through Stanis-  
laus" theme, com-  
plete with juke  
box, drive-in res-  
taurant and an  
array of agricul-  
tural products.*



## 2007 Crop Report Questionnaire

The 2007 Stanislaus County crop report questionnaires have been mailed. The responses are anonymous and are strictly confidential. The timely completion of the questionnaire is a crucial component in the production of an accurate and informative Crop Report for Stanislaus County. Our Department does obtain statistics from several sources for the Crop Report but data provided by our local growers is critical to local value determination.

- § The information on the Crop Report is critical in accurately determining the overall value of agriculture in Stanislaus County. For some commodities, the questionnaire data is the sole source of value determination.
- § In the case of a disaster or catastrophic event that affects Stanislaus County agriculture, the information in the Crop Report may be used to indemnify Stanislaus County and/or the agricultural community.

- § Lending institutions and government agencies use the information compiled in the Crop Report to make decisions about farm loans.
- § The data provided by the growers determines where Stanislaus County ranks among the counties in California and the nation in agricultural production.
- § The Stanislaus County Department of Agriculture and Weights and Measures receives numerous calls from the media inquiring about county agricultural production. The Crop Report provides the media with a reliable and complete source of agricultural statistical information to insure the volume and variety of Stanislaus County's agricultural products are accurately portrayed in articles, news reports, etc. This statistical information is provided through the annual crop report.

If you need help completing the questionnaire, please contact our office at (209) 525-4730.

