

# Agriculture

## AGRICULTURE

### CONSUMER PROTECTION

Seed Regulation and Seed Services



To assure compliance with laws and regulations pertaining to identity, purity and viability of agricultural and vegetable seed. To cooperate with the California Crop Improvement Association in the certification of seed.

### SPECIAL SERVICES

#### Crop Statistics

The County's annual agricultural statistics are compiled and provided to the Board of Supervisors, growers, food processors, libraries, businesses, schools and other interested parties.



## WEIGHTS & MEASURES

*"May Equity Prevail in the Marketplace"*



Weights and Measures protects the interests of the buyer and seller, ensuring honesty and integrity of everyday business transactions. Every transaction involving the exchange of goods, property and service is affected by some form of weights and measures.

CONSUMER PROTECTION

## WEIGHTS & MEASURES

#### Device Inspection

There are approximately 9,000 devices in Stanislaus County that require inspection—gasoline dispensers, taxi meters, retail water and electric meters, deli counter, livestock and vehicle scales are examples. A seal of accuracy is affixed to the device after inspection. Devices that are out of compliance are removed from service until repaired.



#### Quantity Control

Packaged goods are checked for stated content and proper labeling. Scanner systems are checked for pricing accuracy.



#### Petroleum

Inspectors check the quality and labeling of petroleum products as well as gas station price sign advertising. Random samples of petroleum products are taken to ensure compliance with national standards.



#### Weighmaster

Weighmasters are licensed to certify the weighed, measured or counted quantity of a commodity. Inspectors ensure the accuracy of certificates issued by weighmasters.



# Stanislaus

## STANISLAUS COUNTY

Agricultural Commissioner  
Sealer of Weights and Measures



### Agricultural Center

3800 Cornucopia Way Suite B  
Modesto, California 95358  
Phone: (209) 525-4730  
Fax: (209) 525-4790



[www.stanag.org](http://www.stanag.org)

STANISLAUS COUNTY BOARD OF SUPERVISORS

Bill O'Brien, District 1

Vito Chiesa, District 2  
Jeff Grover, District 3

Dick Monteith, District 4  
Jim DeMartini, District 5



Gary Caseri  
Agricultural Commissioner  
Sealer of Weights and Measures

# Agriculture AGRICULTURE

## Pest Exclusion

The prevention of entry into the County or spread of harmful insects, weeds, plant disease and other pests. The certification of agricultural export shipments to meet import requirements of importing countries. The prevention of entry into the County or spread of harmful insects, weeds, plant diseases and other pests. The certification of agricultural export shipments to meet requirements of importing countries.



# ENVIRONMENTAL PROTECTION

## Pest Detection

Surveys for discovery of incipient infestations of pests which may have eluded our exclusion efforts.



*Mediterranean  
Fruit Fly*



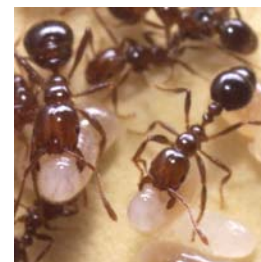
*Glassy-Winged  
Sharpshooter*

## Pest Management

Controlling the population of pests through education and identification of pests.

## Pest Eradication

The elimination of infestations of new pests.



*Red Imported Fire Ant*

# ENVIRONMENTAL PROTECTION



## Pesticide Use Enforcement



A major program which oversees the use of pesticides applied in the production and storage of agricultural crops. This includes the registration of Pest Control Operators and Advisors, the supervision of Pesticide Dealers and the monitoring of pesticide use by the public through inspections and the issuance of pesticide permits.

## Fruit & Vegetable Quality Control

To ensure that maturity, quality, labeling and packaging standards are met for fruits and vegetables.



## Egg Enforcement

Ensures that quality and labeling standards are met pertaining to eggs.



## Nursery Regulation

To assure consumers of nursery stock which is properly labeled, reasonable free of common pests, and in a viable condition.



# CONSUMER PROTECTION

Support and protect the well-being of Agriculture, Business and the Community

# Mission

# Vision

...a county that is respected for its service in the community and is known as the best in America.